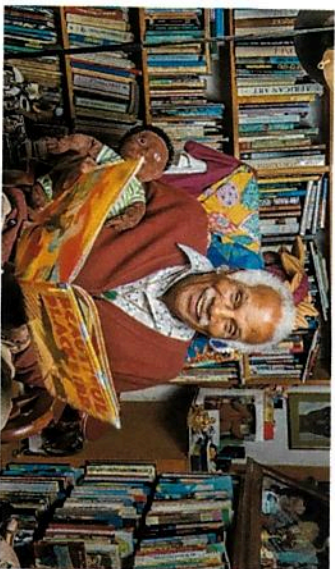


## The Ashley Bryan Art Collection



### Navigation:

A link to the Ashley Bryan Art Collection can be found on the left-hand column of the main page of the Ashley Bryan Art Project.

### Art Work included:

1. Photos of Original artwork and sketches donated by Ashley Bryan to the African-American Research Library and Cultural Center.
2. Photos of original artwork donated by 11 of the Ashley Bryan Art Series honorees



African American Research Library  
and Cultural Center  
2650 Sistrunk Boulevard  
Fort Lauderdale, FL 33311

### The Ashley Bryan Art Project

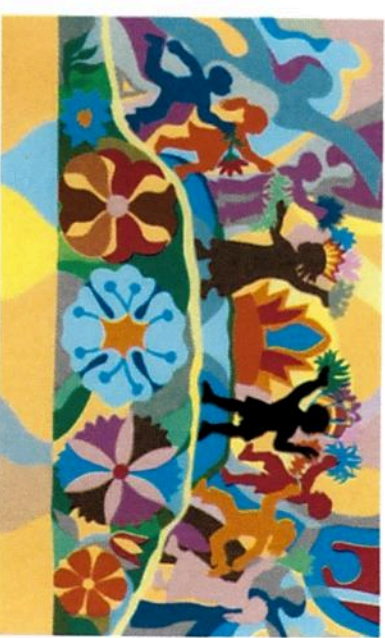
[https://broward.ent.sirsi.net/client/en\\_US/ashleybryan](https://broward.ent.sirsi.net/client/en_US/ashleybryan)

### Broward County Library

[www.broward.org/library](http://www.broward.org/library)



### The Ashley Bryan Art Project



Ashley Bryan, *Let it Shine*, collage on paper.

Since 2002, the African-American Research Library and Cultural Center (AARLCC) has presented the Ashley Bryan Art Series providing programming and outreach to Broward County youth with the goal of educating and inspiring art appreciation and literacy. The ABAS hosts nationally recognized illustrators of African descent.

The participating illustrator donates a piece of original art from one of their children's books. Funded by the American Library Association's Carnegie-Whitney Grant, The Ashley Bryan Project Resource Guide features information on all fifteen exceptional author/illustrators who are represented in the Ashley Bryan Art Collection (ABAC).



# Ashley Bryan Art Project

## ACCESS:

**Direct link:** [https://broward.ent.sirsi.net/client/en\\_US/ashleybryan](https://broward.ent.sirsi.net/client/en_US/ashleybryan)

**From Broward County Library's website:**

1. Navigate to <http://www.broward.org/library>
2. Enter a search term into the "Search catalog" search bar just below the Broward County Library banner (ex: Ashley Bryan)
3. This will guide the user to BCL's Sirsi homepage. Above the search bar is a series of links, click on "The Ashley Bryan Project"



AFRICAN AMERICAN RESEARCH LIBRARY  
& CULTURAL CENTER

**African American Research Library  
and Cultural Center**  
2650 Sistrunk Boulevard  
Fort Lauderdale, FL 33311

## THE ASHLEY BRYAN PROJECT

### HOME PAGE NAVIGATION

1. On the central part of the "home" page is a description of the Ashley Bryan Art Project.
2. On the left-hand column are links to the content of the project including individual illustrator pages, a compilation of artwork from those Illustrators housed at the African-American Research Library and Cultural Center, essays related to the collection and further resources.
3. In the bottom corner of the left-hand column is a link to the homepage of the African-American Research Library and Cultural Center

## THE ASHLEY BRYAN ART PROJECT ILLUSTRATOR PAGES NAVIGATION

1. In the left-hand corner are links to other illustrator pages, essays or resources
2. Below that, in the left column is a biography of the illustrator and, if available, a thumbnail image and a link to a larger image of their artwork that is displayed at the African-American Research Library and Cultural Center.
3. The center column includes an image of the illustrator, a link to a video related to them (if available) and an annotated bibliography including links to a bibliographic record of the Broward County Library's copy of that if available.
4. The right-hand column includes cover images of books the illustrator has written as well as illustrated.

## Other Resources:

1. In the left-hand column underneath the illustrator links are various other resources including a tribute to Dr. Henrietta Smith, links to images of the Ashley Bryan Art Collection, general resources, Reflection essays on Ashley Bryan and the collection and books related to Juneteenth.

### Resources Page Navigation

1. in the left-hand column are links to teacher guides as well as blogs, websites and organizations related to Ashley Bryan as well as diversity in children's literature.
2. In the center column are links to general Broward County Library online Resources.
3. In the right-hand are links to articles related to various subjects including diversity in publishing and representation in literature and art.

### Reflection Essays

1. This page includes links to writing commissioned for the Ashley Bryan Project including essays by Ashley Bryan Art Series honoree Charles R. Smith, Jr., Augusta Baker Endowed Chair at the University of South Carolina Nicole Cooke, and former African-American Research Library and Cultural Center Director Julie Hunter among others.